

## PUPPET RING

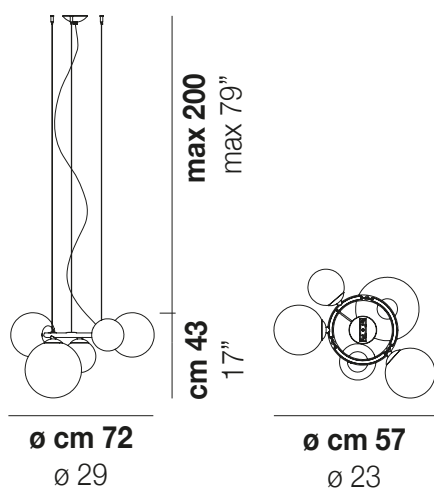
Design Romani Saccani Architetti Associati

## PUPPET RING SP 5

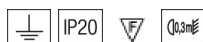


The distinctive feature of this model from the Puppet Ring collection are the rings with increasing diameter. They can be combined in different sequences to form the framework on which the precious glass spheres in three different sizes are placed, blending with the structure thanks to a preformation inside the blown glass. Aesthetically light and elegant, Puppet Ring ethereally combines crystal, smoky, amber and shaded white glass with gold and black matt nickel finishes.

## PUPPET RING SP 5



### TECHNICAL DATA:



### CERTIFICATIONS:



### LIGHT SOURCES

5x60W 220-240 V  
50/60 Hz G9

VOLUME Mc 0,3  
GROSS WEIGHT Kg 15  
NET WEIGHT Kg 10

[download](#)



### SHADE FINISHING



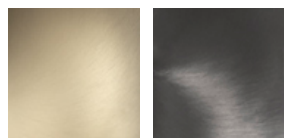
AMTR

BCSF

CRTR

FUTR

### FRAME FINISHING

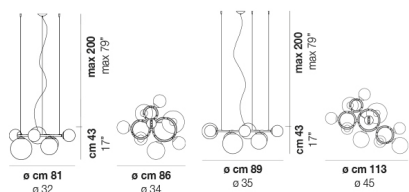


BKS

NNS

### OTHER VERSION AVAILABLE

Click on the version to go to the web version of the product



[PUPRI SP 7](#)

[PUPRI SP 9](#)